



**LAHTI**  
PRECISION



**Earn more  
with Drymix<sup>LAHTI</sup>**



# Get shorter payback for your investment – more profit with Drymix<sup>LAHTI</sup>

## Drymix<sup>LAHTI</sup>

Drymix<sup>LAHTI</sup> concept provides features which only Lahti Precision can supply. These features enable customer to make profit substantially better than the peer group utilizing other technologies. The core of Drymix<sup>LAHTI</sup> concept is based on four innovative technologies: Dosing<sup>LAHTI</sup>, Weighing<sup>LAHTI</sup>, Mixing<sup>LAHTI</sup> and Automation<sup>LAHTI</sup>. These together are ensuring superior dynamic dosing accuracy, excellent plant availability with low maintenance costs and homogenous end product with very low scrap rate. Drymix<sup>LAHTI</sup> concept considers sustainable environment values.

## Dosing<sup>LAHTI</sup>

Dosing<sup>LAHTI</sup> technology with unique features provides the best value adding comparing to the other technology. Dosing<sup>LAHTI</sup> solutions are configurable and are built of different equipment and elements to be tailored for the each purpose. The system is consisting of high quality components which provides for Dosing<sup>LAHTI</sup> solutions higher availability and better accuracy than standard systems available on the markets. Dosing<sup>LAHTI</sup> technology is suitable for dry bulk materials including fine ingredients..

## Weighing<sup>LAHTI</sup>

Lahti Precision has engineered and supplied scales since year 1914. This has provided for us conclusive deep understanding of scales' engineering. Weighing<sup>LAHTI</sup> products are modern industrial scales or systems including demanding weighing technology. When combining Weighing<sup>LAHTI</sup> products and Lahti Precision's rights and capability to execute the scales' initial verification it's clear that Lahti Precision is your first selection for industrial scale supplier.

## Engineering<sup>LAHTI</sup>

Proper engineering is a vital phase, when building dosing systems. Solutions created during this phase guarantee a high quality result tailored to the customer's needs. It also ensures that lead time is in control and significant savings in total costs are achieved. Engineering<sup>LAHTI</sup> combines our long-term experience and the latest development in engineering offering the optimized solutions for all phases of the engineering, such as process, layout, prefabrication and steel construction.

## Mixing<sup>LAHTI</sup>

One the most important process phases in dry mix production is mixing. Mixing<sup>LAHTI</sup> technology provides excellent product homogeneity in short mixing time. Gentle Mixing<sup>LAHTI</sup> is excellent choice especially in the plants where are produced high end products containing a big amount of different raw materials. The mixer is emptying out quickly through bottom hatches and the mixer is easy to clean by utilizing semi-automatic cleaning system.

## Automation<sup>LAHTI</sup>

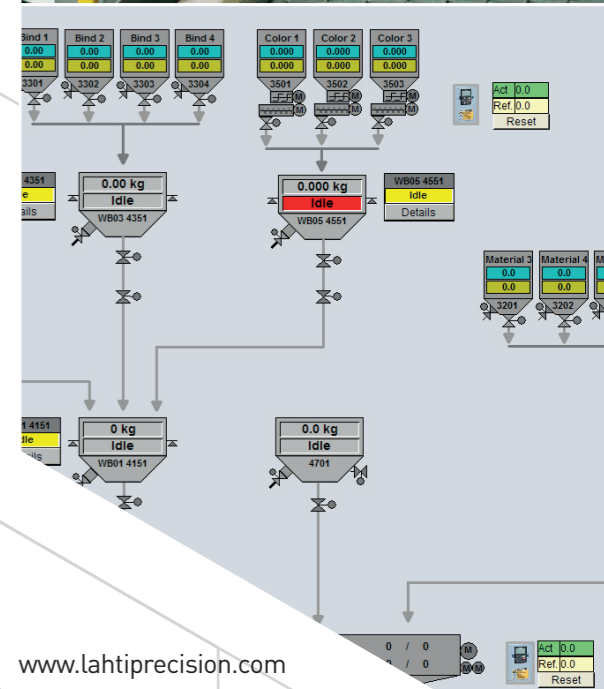
Lahti Precision has executed hundreds of different projects where large scale automation has been in vital role. The driven force in Automation<sup>LAHTI</sup> technology is to prevent the issues existing in the conventional automation solutions. Automation<sup>LAHTI</sup> includes proven versatile properties, like advanced reporting, easy operability and safe remote controlling. Additionally one of the most important features in Automation<sup>LAHTI</sup> is keeping the system up to date throughout the life cycle of the plant. Tested and modularized technology allow efficient updating of the system, when modernizing the plant. Automation<sup>LAHTI</sup> includes only high quality components and Lahti Precision is also Siemens Solution Partner.

## Start<sup>LAHTI</sup>

Start<sup>LAHTI</sup> service has been developed to get the process into operation with full capacity within short time. Understanding the demanding production processes combined with our own engineering and assembly of equipment creates a solid foundation for Start<sup>LAHTI</sup>. The service ensures efficient start-up of the plants, equipment, installations and training. Start<sup>LAHTI</sup> creates the basic conditions for the safe and optimal use of the devices we supply. With the help of Start<sup>LAHTI</sup> service, our customers reduce the time of production disruptions and quality problems during the whole lifecycle of the plant.

## Care<sup>LAHTI</sup>

Once the devices and installations have been effectively deployed through the Start<sup>LAHTI</sup> service, Care<sup>LAHTI</sup> ensures their cost-effective use throughout their life cycle. Lahti Precision's experience and expertise in hardware lifecycle maintenance, calibration, modernization and availability of original spare parts are cornerstones of Care<sup>LAHTI</sup>. Lahti Precision's understanding of the need for proactive maintenance is an important factor in preventing unforeseen production breaks or quality errors. In addition, knowing the requirements of measurement, norms and metrological regulations is the best way to optimize our customers' process solutions.







**LAHTI**  
PRECISION

03/2019

## Experience that weighs



**LAHTI PRECISION OY**

Mestarinkatu 2, P.O.B. 22

FI-15801 Lahti, Finland

Tel. +358 3 829 21

Fax +358 3 829 4100

[general@lahtiprecision.com](mailto:general@lahtiprecision.com)

[www.lahtiprecision.com](http://www.lahtiprecision.com)