



**LAHTI
PRECISION**

Mestarinkatu 2, P.O.B. 22
FI-15801 Lahti, Finland
Tel. +358 3 829 21
Fax +358 3 829 4100
www.lahtiprecision.com

WA-801 Weight Indicator

for Basic Weighing Applications

- Legal-for-trade
- Simple keyboard
- One serial port
- Analog output 0(4) - 20 mA
- Supply voltage 100-230 VAC
- Enclosure IP65, Stainless steel
- Optional accessories
 - Legal-for-trade memory
 - Fieldbus interface modules

APPLICATION

The WA-801 weight indicator is perfectly suited to all applications where weights are recorded and displayed. Results can be transferred to master systems for further processing.

WA-801 indicator is excellently suited to industrial weighing applications. Some typical applications are:

- Platform scales without major control jobs
- Weight transmitter solutions with fieldbus interface to automation system.

The indicator fits easily into data processing and control systems with its extensive fieldbus communication options.

EQUIPMENT

This indicator has an easily readable back lighting LCD display. Data is keyed in via flexible membrane keyboard with 9 keys.

The WA-801 has a RS-232 serial interface and an 0(4) - 20 mA analog output.

WA-801 can be conveniently configured and calibrated via the WA-plan PC program.

COMMUNICATION

The WA-801 has a one RS-232 serial interface that can be used to connect a printer or large display.

WA-801 weight indicator is excellently equipped for exchanging data with automation systems such as PLC equipment.

Beyond this, the standard fieldbus system

- Profibus DP-V0 and
 - DeviceNet
- can be connected via matching optional coupling modules.

INPUTS AND OUTPUTS

WA-801 has a 12-bit analog output that can transfer for example weight or material flow to a PLC or display.

OPERATION AND SETTINGS

Standard operation is in:

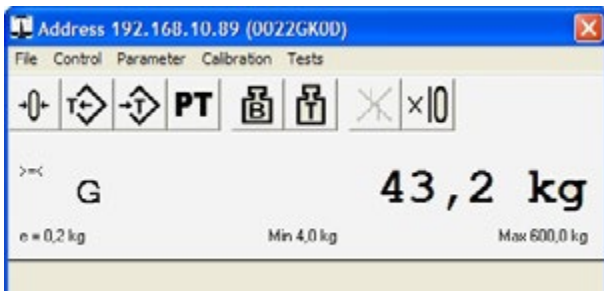
- Finnish
- English.

All operator guidance is carried out and data is entered in clear text.

You can easily load other operating languages into the instrument via the PC-assisted WA-plan configuration program (WINDOWS program).

WA-plan also allows:

- setting all instrument parameters
- calibrating the instrument
- conveniently configuring the print pattern
- read-out and display of weight signals
- reading out the complete instrument configuration (backup)
- restoring stored data into a WA weight indicator. This means a substitute can be prepared at short notice.

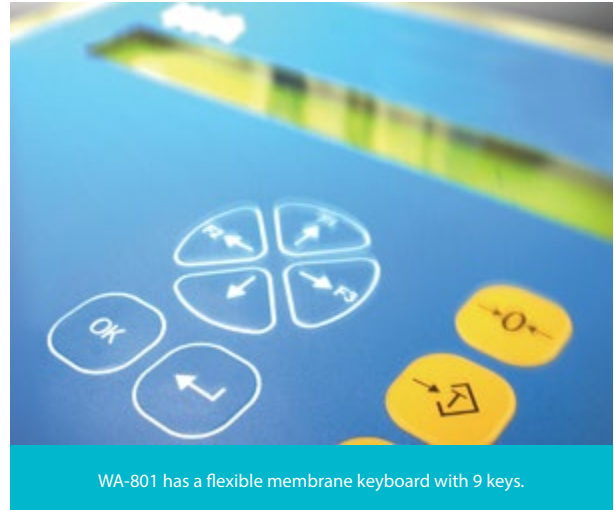


All parameter and calibration data are stored power failure safe in the instrument. The real-time clock runs at least 7 days without a power supply.

FUNCTIONS

Beyond the basic scale functions such as

- Acquire and clear tare
- Zero positions
- Print



LEGAL-FOR-TRADE MEMORY

The additional built-in legal-for-trade memory releases the user from the necessity of creating and archiving legal for trade vouchers on paper.

COMPUTING POWER

In spite of its low price, WA-801 weight indicator has enormous processing performance. The 32-bit ARM controller also has sufficient power reserves for fast weighing processes, simultaneous operation of various interfaces and also for future applications.

DONGLE STRATEGY

All of the scale's relevant setting and calibration data are stored in the dongle. Since all of our instruments are calibrated at the factory for identical sensitivity, you can interchange the electronic equipment at any time if there is a defect. After attaching the dongle, the scale is correctly configured and calibrated again. This means that even legal for trade scales do not have to be recalibrated or reverified.